

Thomson Reuters' PointConnect service provides a feed of fundamental data curves for energy market participants, delivered over FTP.

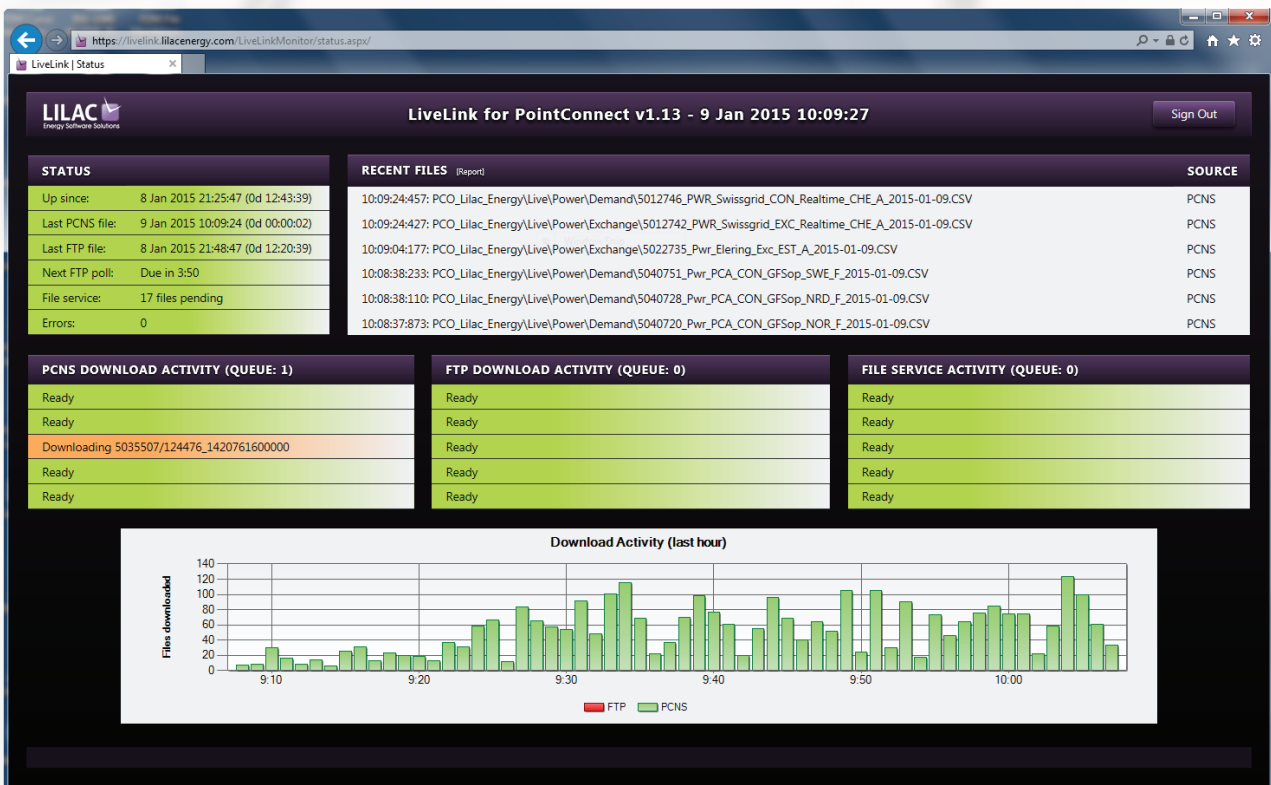
Now, a new and more responsive data delivery system called PCNS (PointConnect Notification System) is available, which uses a cloud-based push messaging system to notify immediately when new and changed data is available, backed with a new web-service based transport to receive the files.

Lilac's LiveLink for PointConnect provides an off-the-shelf solution to taking advantage of the new PCNS service,

providing significantly faster update times with simple implementation and minimal change to any existing IT configuration or infrastructure.

LiveLink continuously listens on the PCNS interface for new and changed data and automatically downloads the updated files as they become available. The files are then immediately available for reading.

Alongside PCNS, LiveLink also implements a full FTP transport which handles initial data loading and historic data updates, and provides an automatic fallback for live data updates in the event of a PCNS service outage.



## Tree and flat directories

As well as maintaining a constantly updated image of the PointConnect FTP file tree, LiveLink also provides optimised file access using a single flat directory which is dynamically updated with uniquely-named copies of new files as they are made available.

A client's data extraction process can use this as a working directory to access new or changed files immediately, deleting them once they have been processed. This allows much faster direct access to updated files without having to check for changes, or having to traverse the PointConnect directory tree.

## Implementation

LiveLink is normally delivered as a customer-dedicated hosted service providing access to the data files by secure FTP, and the status monitor (above) as a web service. On-premises implementation is also available.

LiveLink is available stand-alone, or integrated with Lilac's Fundamental Data Manager system, which offers data warehousing and advanced data search, querying and metadata management.

## More information

For more information, please contact [info@lilacenergy.com](mailto:info@lilacenergy.com)